

GREATSPOT
Immobilien



Representative turn-of-the-century
Palais in the Greatspot parkland in
Vienna's elegant green district

Sieveringer Straße 245/1 (Haupthaus) | 1190 Vienna

Representative turn-of-the-century Palais in the Greatspot parkland in Vienna's elegant green district

Sieveringer Straße 245/1 (Main Residence) |
1190 Vienna

Description

This representative 1000m² turn-of-the-century castle is located in a 1000m² park landscape with old trees in the noble district of Döbling in Vienna.

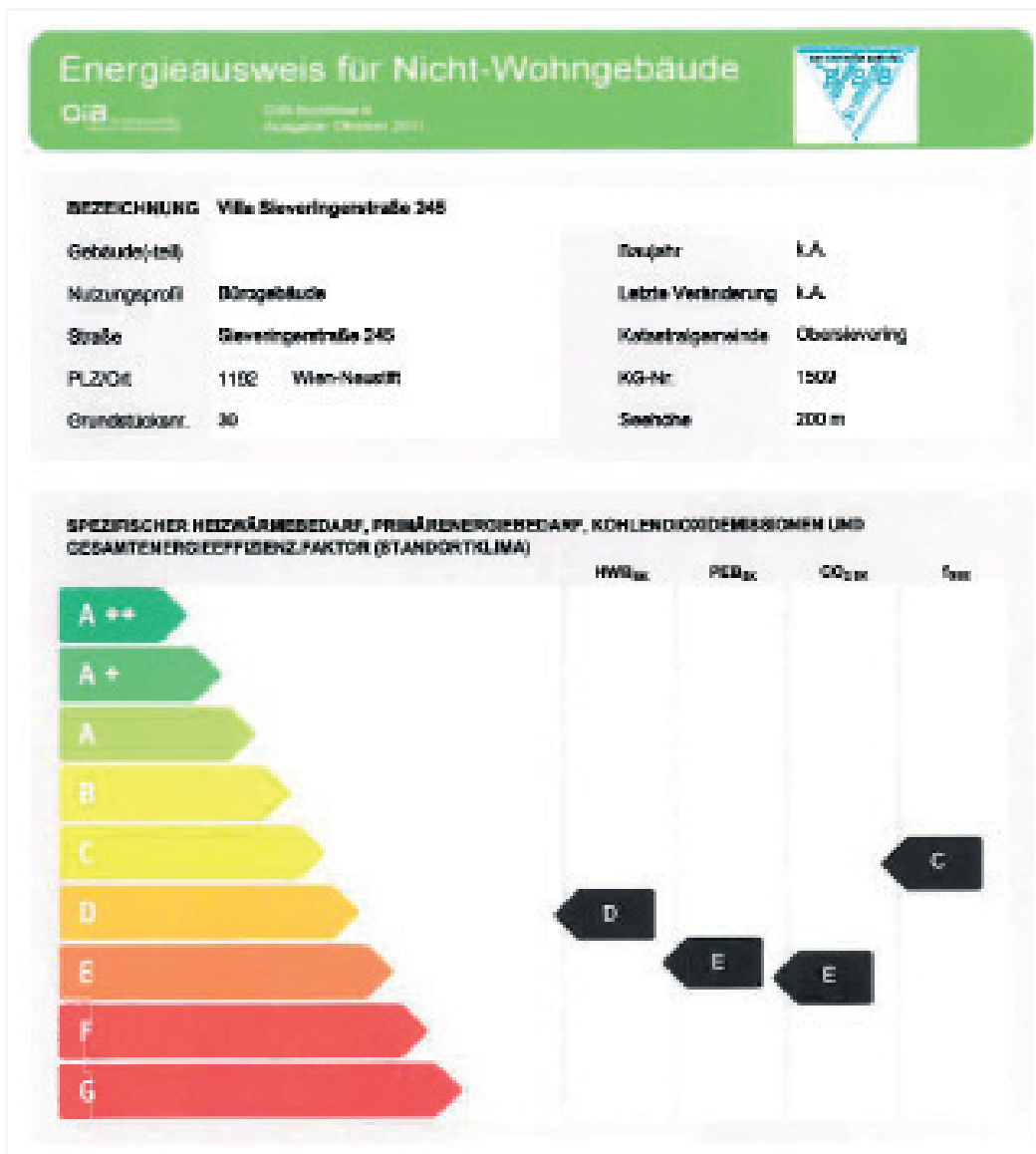
Living Space: 1800 m²

Terrace:

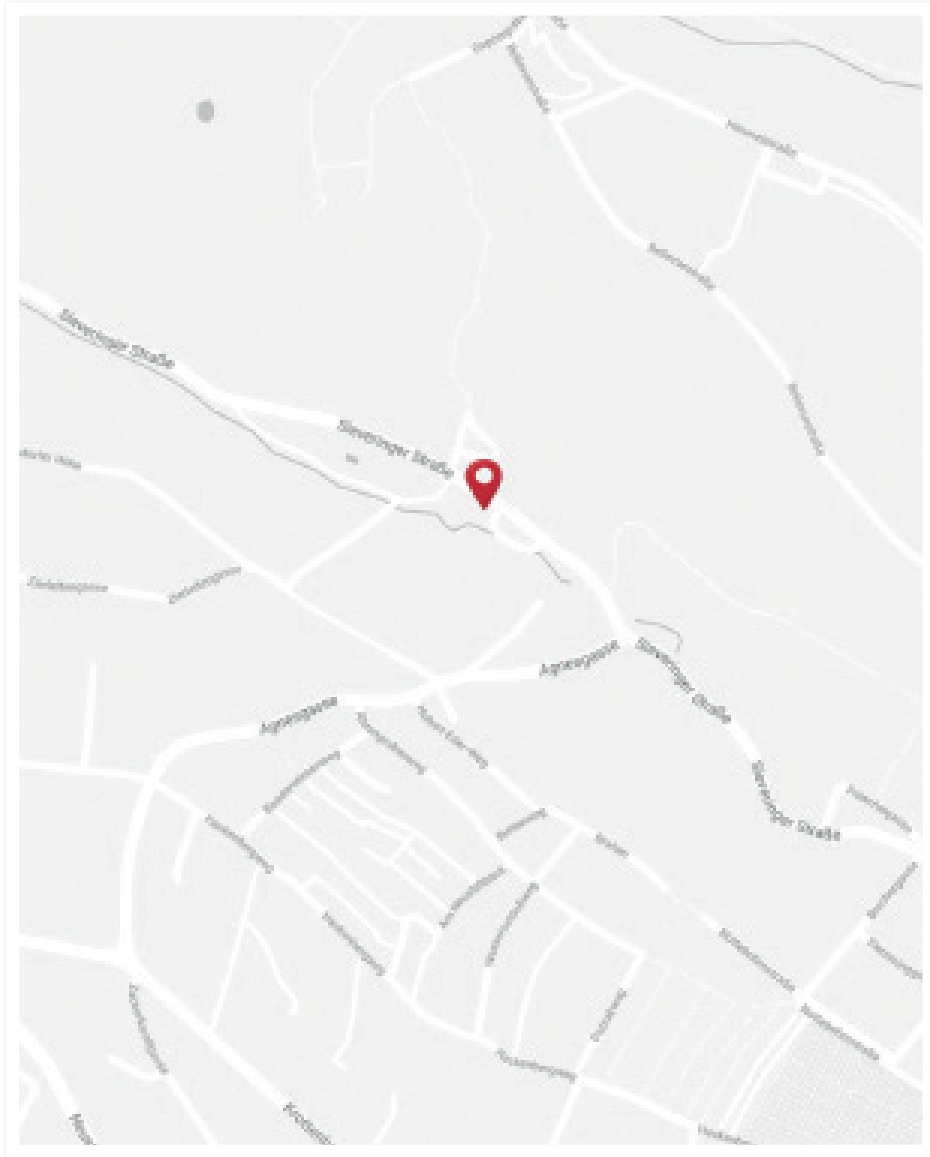
Garden: 9000 m²

Garage:

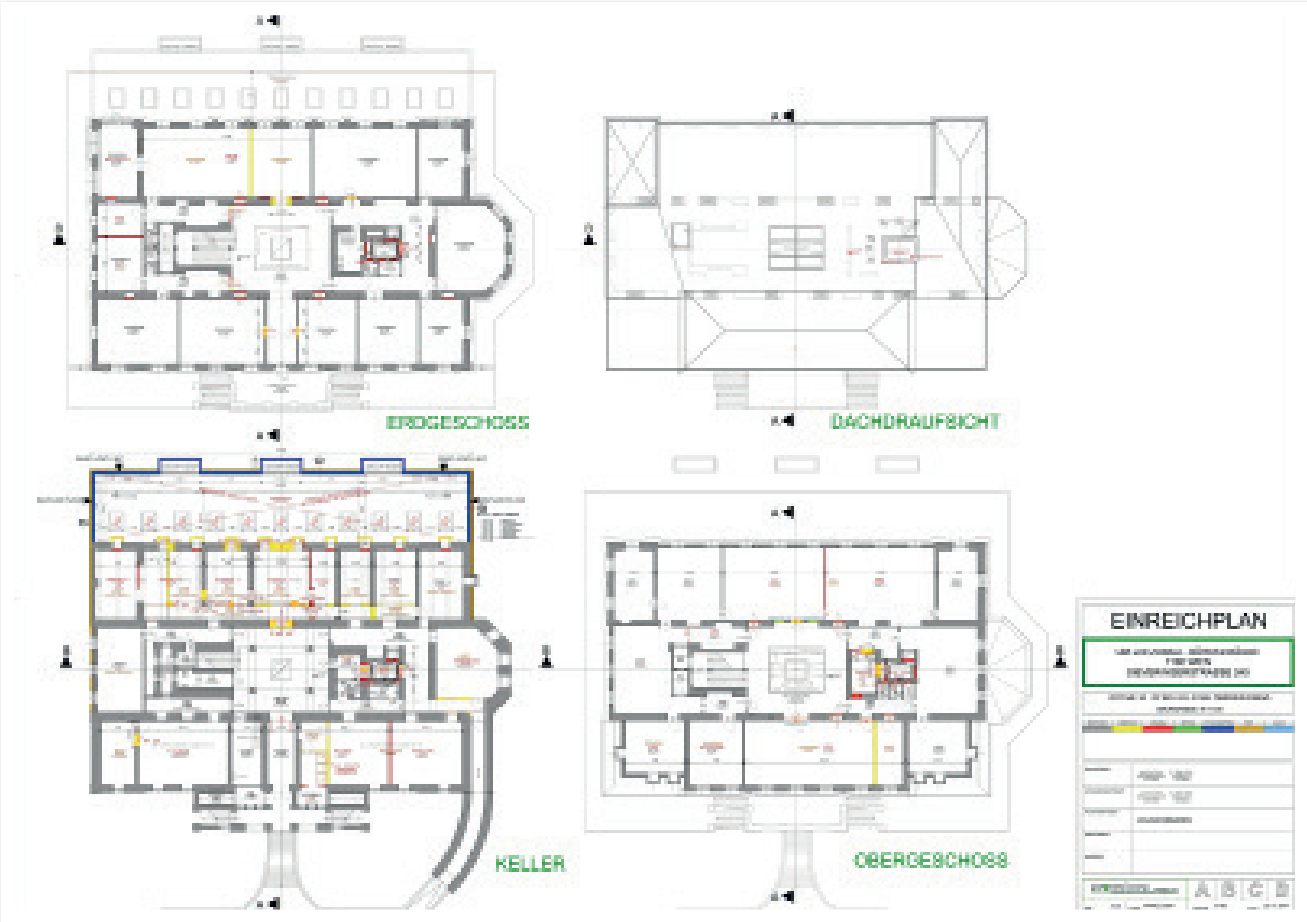
Energy Pass



Site Map



Floor Plan



GREATSPOT
Immobilien

Contact
✉ info@greatspot.at